

ALUMAX LED

NEW



... aluminium, dustproof, waterproof, chemically resistant.

USE

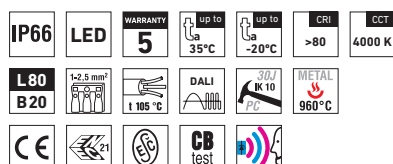
The light fitting is suitable for industrial indoor and outdoor roofed spaces, warehouses, garages, workshops, sports areas, transport terminals, utility structures, agricultural operations and laboratories without a danger of explosion of gases, dust and combustible fumes.

The light fitting is resistant to deformation, dust, spouting water and chemically aggressive environment.

Characteristics of the used tempered glass and its shattering power are controlled by the ČSN EN 12150-1 standard.

ADVANTAGES

- Light fitting protection **IP66**
- Maximum ambient temperature **$t_a = 35^\circ\text{C}$**
- Lifetime: 50,000 hours / L80B20
- Diffuser: tempered glass with high mechanical resistance
- Body: grey aluminium profile, surface treated with powder-coated colour
- Up to 45 % lower electricity consumption when compared to tubes T5
- In DALI version: possibility of constant luminous flux for whole lifetime (CLO)
- Constant luminous flux even in ambient temperature of -20°C
- Standard model - CRI > 80: 4000 K
- At request CRI > 80: 3000 K, 6500 K
- It can be delivered in dimmable or emergency version
- Certification: ESC, ENEC, CB

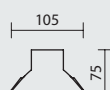
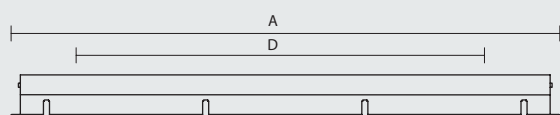


ALUMAX LED

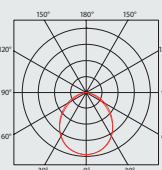


TECHNICAL DESCRIPTION

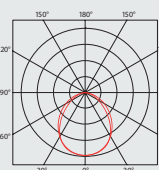
- Light fitting protection: IP66
- Maximum system efficacy: 115 lm/W
- The watt and lumen values can, in accordance with valid standards, vary by $\pm 7,5\%$
- Standard model - CRI > 80: 4000 K
- Lifetime: 50,000 hours / L80B20
- Diffuser: tempered glass
- Body: grey aluminium profile, surface treated with powder-coated colour
- Side covers: grey aluminium alloy with plastic side plates for fixation and suspension of glass at assembly, surface treated with powder-coated colour
- Reflector: steel sheet, white colour (RAL 9003)
- Clips: stainless
- Sealing: polyurethane sealing (PUR) in body groove
- Terminal block: screwless, three-pole (basic version)
- Cable glands: brass M18x1.5
- Installation: package contains stainless sheet suspension brackets and FeZn sliding hangers
- Electric equipment: LED modules, current driver or current driver DALI



ALUMAX LED 1.5ft



ALUMAX LED 2.5ft



Code	Type	Luminous flux of LED modules [lm]	Luminous flux of light fitting [lm]	Power consumption [W]	System efficacy [lm/W]	Net weight [kg]	A [mm]	D [mm]
Diffuser made of tempered glass								
50410	ALUMAX LED 1.2ft 1300/840	1300	1070	10	107	2,2	624	534
50420	ALUMAX LED 1.2ft 1600/840	1600	1290	12	108	2,2	624	534
50430	ALUMAX LED 1.2ft 2200/840	2200	1650	15	110	2,2	624	534
50440	ALUMAX LED 1.4ft 2600/840	2600	1990	18	111	4,2	1224	1134
50450	ALUMAX LED 1.4ft 3200/840	3200	2460	22	112	4,2	1224	1134
50460	ALUMAX LED 1.4ft 4400/840	4400	3340	30	111	4,2	1224	1134
50470	ALUMAX LED 1.5ft 3250/840	3250	2450	22	111	5,0	1524	1434
50480	ALUMAX LED 1.5ft 4000/840	4000	3050	27	113	5,0	1524	1434
50490	ALUMAX LED 1.5ft 5500/840	5500	4210	37	114	5,0	1524	1434
50510	ALUMAX LED 2.2ft 2600/840	2600	1970	18	109	2,4	624	534
50520	ALUMAX LED 2.2ft 3200/840	3200	2440	22	111	2,4	624	534
50530	ALUMAX LED 2.2ft 4400/840	4400	3300	30	110	2,4	624	534
50540	ALUMAX LED 2.4ft 5200/840	5200	3930	35	112	4,3	1224	1134
50550	ALUMAX LED 2.4ft 6400/840	6400	4820	42	115	4,3	1224	1134
50560	ALUMAX LED 2.4ft 8800/840	8800	6670	58	115	4,3	1224	1134
50570	ALUMAX LED 2.5ft 6500/840	6500	5010	44	114	5,3	1524	1434
50580	ALUMAX LED 2.5ft 8000/840	8000	6040	53	114	5,3	1524	1434
50590	ALUMAX LED 2.5ft 11000/840	11000	8130	71	115	5,3	1524	1434

50450 ALUMAX LED 1.4ft 3200/840 = suitable replacement for ALUMAX 136 E - 1x36 W

50480 ALUMAX LED 1.5ft 4000/840 = suitable replacement for ALUMAX 158 E - 1x58 W

50550 ALUMAX LED 2.4ft 6400/840 = suitable replacement for ALUMAX 236 E - 2x36 W

50580 ALUMAX LED 2.5ft 8000/840 = suitable replacement for ALUMAX 258 E - 2x58 W

ALUMAX LED

Diffuser made of tempered glass, stainless clips

Code	Type	1F	3F	M1h	M3h	1F M1h	3F M1h	3F M3h
50410	ALUMAX LED 1.2ft 1300/840	x	x	x	x	x	x	x
50420	ALUMAX LED 1.2ft 1600/840	x	x	x	x	x	x	x
50430	ALUMAX LED 1.2ft 2200/840	x	x	x	x	x	x	x
50440	ALUMAX LED 1.4ft 2600/840	50441	50443	50444	50445	x	50447	50448
50450	ALUMAX LED 1.4ft 3200/840	50451	50453	50454	50455	x	50457	50458
50460	ALUMAX LED 1.4ft 4400/840	50461	50463	50464	50465	x	50467	50468
50470	ALUMAX LED 1.5ft 3250/840	50471	50473	50474	50475	x	50477	50478
50480	ALUMAX LED 1.5ft 4000/840	50481	50483	50484	50485	x	50487	50488
50490	ALUMAX LED 1.5ft 5500/840	50491	50493	50494	50495	x	50497	50498
50510	ALUMAX LED 2.2ft 2600/840	x	x	x	x	x	x	x
50520	ALUMAX LED 2.2ft 3200/840	x	x	x	x	x	x	x
50530	ALUMAX LED 2.2ft 4400/840	x	x	x	x	x	x	x
50540	ALUMAX LED 2.4ft 5200/840	50541	50543	50544	50545	x	50547	50548
50550	ALUMAX LED 2.4ft 6400/840	50551	50553	50554	50555	x	50557	50558
50560	ALUMAX LED 2.4ft 8800/840	50561	50563	x	x	x	x	x
50570	ALUMAX LED 2.5ft 6500/840	50571	50573	50574	50575	x	50577	50578
50580	ALUMAX LED 2.5ft 8000/840	50581	50583	50584	50585	x	50587	50588
50590	ALUMAX LED 2.5ft 11000/840	50591	50593	x	x	x	x	x

Example of type marking: 50555 = ALUMAX LED 2.4ft 6400/840 M3h

ALUMAX LED DALI

Digital dimmable driver DALI, diffuser made of tempered glass, stainless clips

Code	Type	1F	3F	M1h	M3h	1F M1h	3F M1h	3F M3h
50610	ALUMAX LED 1.2ft 1300/840 DALI	x	x	x	x	x	x	x
50620	ALUMAX LED 1.2ft 1600/840 DALI	x	x	x	x	x	x	x
50630	ALUMAX LED 1.2ft 2200/840 DALI	x	x	x	x	x	x	x
50640	ALUMAX LED 1.4ft 2600/840 DALI	50641	50643	50644	50645	x	x	x
50650	ALUMAX LED 1.4ft 3200/840 DALI	50651	50653	50654	50655	x	x	x
50660	ALUMAX LED 1.4ft 4400/840 DALI	50661	50663	50664	50665	x	x	x
50670	ALUMAX LED 1.5ft 3250/840 DALI	50671	50673	50674	50675	x	x	x
50680	ALUMAX LED 1.5ft 4000/840 DALI	50681	50683	50684	50685	x	x	x
50690	ALUMAX LED 1.5ft 5500/840 DALI	50691	50693	50694	50695	x	x	x
50710	ALUMAX LED 2.2ft 2600/840 DALI	x	x	x	x	x	x	x
50720	ALUMAX LED 2.2ft 3200/840 DALI	x	x	x	x	x	x	x
50730	ALUMAX LED 2.2ft 4400/840 DALI	x	x	x	x	x	x	x
50740	ALUMAX LED 2.4ft 5200/840 DALI	50741	50743	50744	50745	x	x	x
50750	ALUMAX LED 2.4ft 6400/840 DALI	50751	50753	50754	50755	x	x	x
50760	ALUMAX LED 2.4ft 8800/840 DALI	50761	50763	x	x	x	x	x
50770	ALUMAX LED 2.5ft 6500/840 DALI	50771	50773	50774	50775	x	x	x
50780	ALUMAX LED 2.5ft 8000/840 DALI	50781	50783	50784	50785	x	x	x
50790	ALUMAX LED 2.5ft 11000/840 DALI	50791	50793	x	x	x	x	x

Example of type marking: 50694 = ALUMAX LED 1.5ft 5500/840 DALI **M1h**

LEGEND

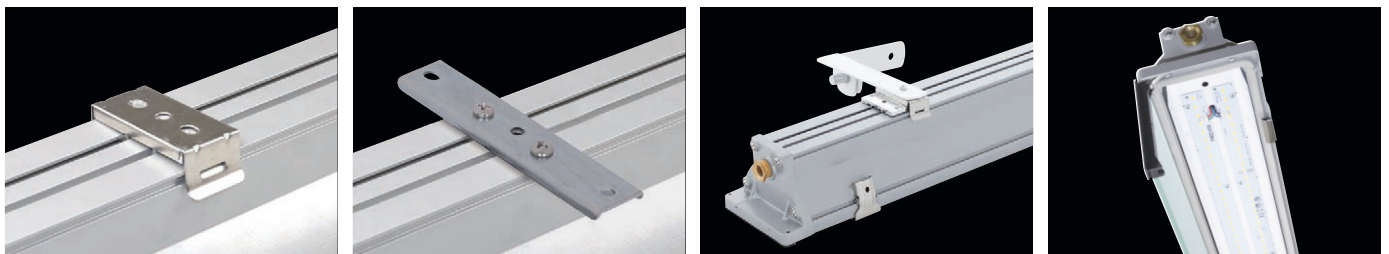
DALI – version with digital dimmable driver DALI
1F – 1 phase wiring cables for through-wiring
3F – 3 phase wiring cables for through-wiring

M1h – emergency back-up source with operating time of 1 hour (SA) for both permanent and emergency illumination
M3h – emergency back-up source with operating time of 3 hours (SA) for both permanent and emergency illumination

Batteries must be formatted before their putting into operation. Assembly instructions must be observed at installation.

LIGHT FITTING ATTACHMENT

- a) Directly to a ceiling or a wall with the use of screws and stainless brackets
- b) To a ceiling or a wall with the use of FeZn sliding hangers in body groove
- c) Attachment with the use of side hangers to the wall



LIGHT FITTING DETAILED VIEW

ALUMAX LED

