

LINEA SQUARE

NEW



... interior square, plastic, surface-mounting.

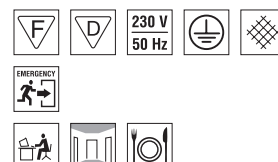
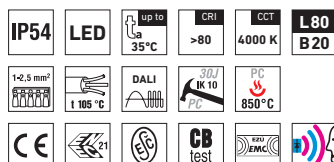
USE

The Linea light fitting line can be used as a comprehensive solution for lighting of office buildings, schools, hospitals, libraries, as well as individual lighting of flat interiors, corridors, sanitary and welfare facilities.

Thanks to its high luminous efficiency and low power consumption, it can suitably replace compact fluorescent light fittings and fluorescent tube light fittings.

ADVANTAGES

- Light fitting protection IP54
- Maximum ambient temperature up to $t_a = 35^\circ\text{C}$
- Lifetime: 50,000 hours / L80B20
- Diffuser: translucent polycarbonate (PC) = high light transmission
- Body: white polycarbonate (PC) = high mechanical resistance
- Up to 50 % lower electricity consumption when compared to compact fluorescent tubes
- In DALI version: possibility of constant luminous flux for whole lifetime (CLO)
- Standard model - CRI > 80: 4000 K
- At request CRI > 80: 3000 K, 5000 K, 6500 K, CRI > 90: 3000 K, 4000 K
- It can be delivered in dimmable or emergency version
- Certification: ESĀ, ENEC, CB

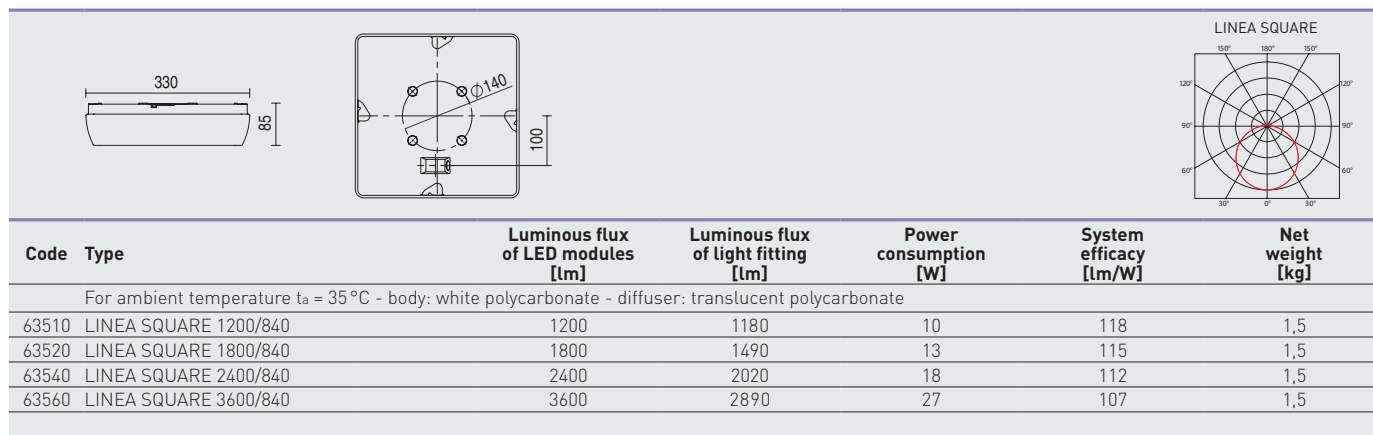


LINEA SQUARE



TECHNICAL DESCRIPTION

- Light fitting protection: IP54
- Maximum ambient temperature: $t_a = 35^\circ\text{C}$,
Maximum ambient temperature: $t_a = 25^\circ\text{C}$
(version with emergency back-up source for 1 hour; M1h)
- Maximum system efficacy: 118 lm/W
- The watt and lumen values can, in accordance with valid standards, vary by $\pm 7,5\%$
- Standard model - CRI > 80: 4000 K
- Lifetime: 50,000 hours / L80B20
- Diffuser: translucent polycarbonate (PC), UV stable, impact-resistant
- Body: white polycarbonate (PC), UV stable, impact-resistant
- Reflector: steel sheet, white colour (RAL 9003)
- Rotary cap: polyamide + 10 % glass fibre
- Sealing: polyurethane (PUR), foamed body groove
- Cable glands: rubber, SBS
- Terminal block: screwless, five-pole (basic version)
- Electric equipment: LED modules, current driver or current driver DALI



63510 LINEA SQUARE 1200/840 = suitable replacement for compact fluorescent lamps 1 x 18W
 63520 LINEA SQUARE 1800/840 = suitable replacement for compact fluorescent lamps 1 x 26W
 63540 LINEA SQUARE 2400/840 = suitable replacement for compact fluorescent lamps 2 x 18W
 63560 LINEA SQUARE 3600/840 = suitable replacement for compact fluorescent lamps 2 x 26W

LINEA SQUARE

Diffuser made of translucent polycarbonate

Code	Type	M1h	M3h	DALI	DALI M1h	Senzor	Senzor M1h
63510	LINEA SQUARE 1200/840	63514	63515	63513	63517	x	x
63520	LINEA SQUARE 1800/840	63524	63525	63523	63527	x	x
63540	LINEA SQUARE 2400/840	63544	63545	63543	63547	x	x
63560	LINEA SQUARE 3600/840	63564	63565	63563	63567	x	x

Example of type marking: 63543 = LINEA SQUARE 2400/840 DALI

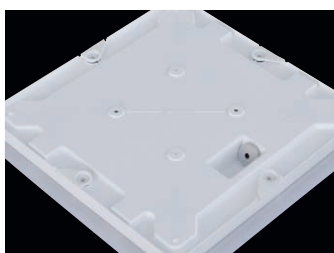
LEGEND

- DALI** – version with digital dimmable driver DALI
- Senzor** – microwave motion sensor

- M1h** – emergency back-up source with operating time of 1 hour (SA) for both permanent and emergency illumination
 - M3h** – emergency back-up source with operating time of 3 hours (SA) for both permanent and emergency illumination
- Batteries must be formatted before their putting into operation. Assembly instructions must be observed at installation.

LIGHT FITTING ATTACHMENT AND ITS DETAILED VIEW

Directly to a ceiling or a wall with the use of screws



LINEA SQUARE

