

# TREEVOS PERUN LED

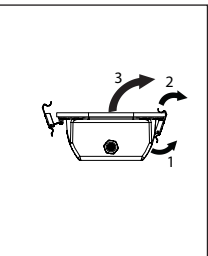
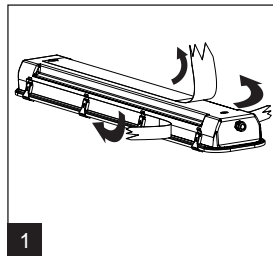
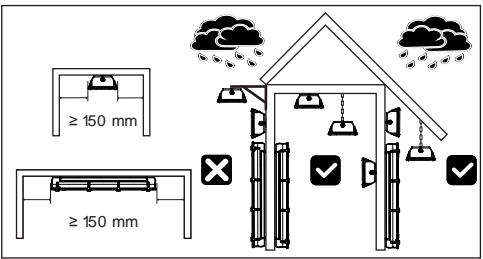
IP65



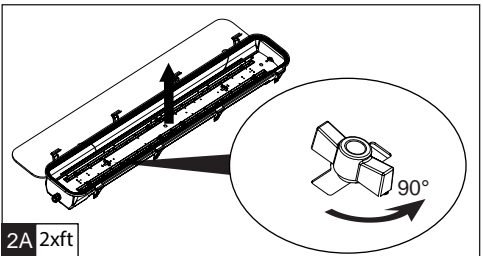
230V  
50Hz



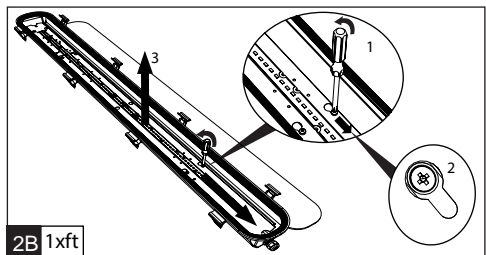
PERUN LED	A	C	D
1.2ft	705	135	500
1.4ft	1305	135	1100
1.5ft	1605	135	1400
2.2ft	705	200	500
2.4ft	1305	200	1100
2.5ft	1605	200	1400



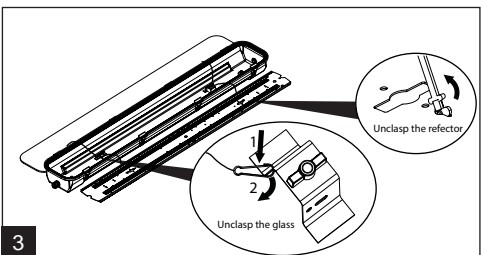
1



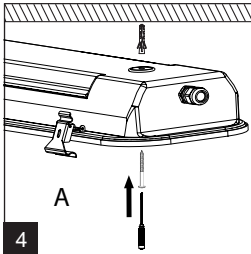
2A 2xft



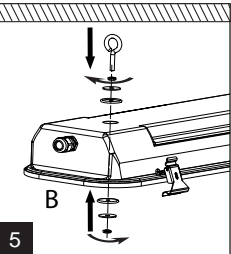
2B 1xft



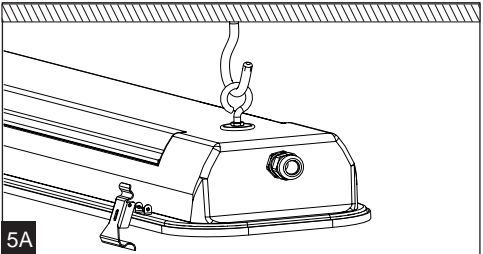
3



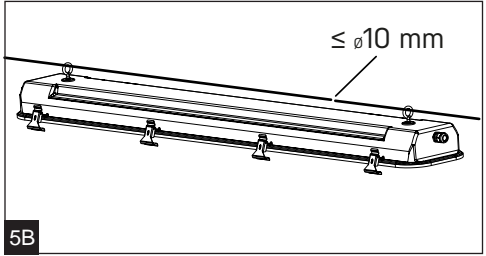
4



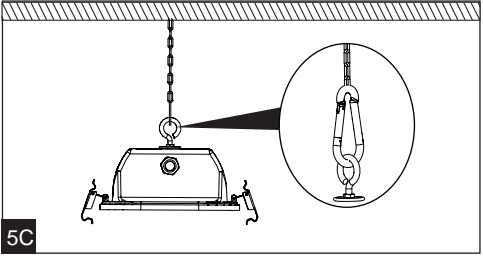
5



5A



5B

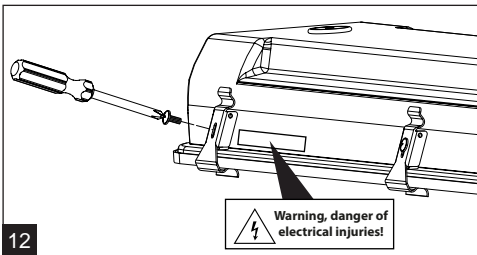
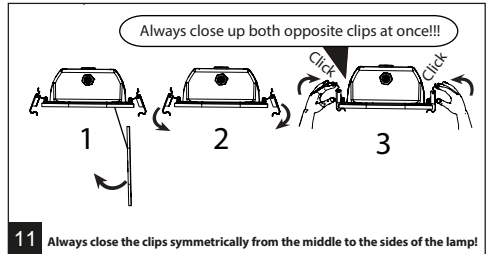
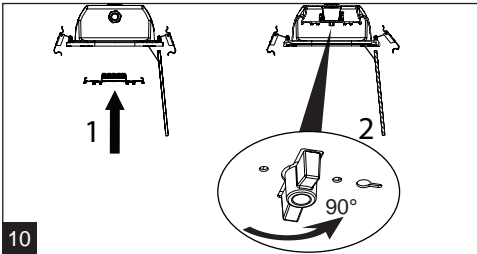
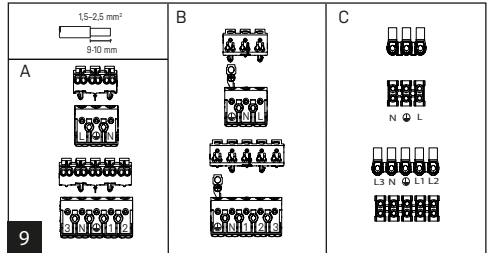
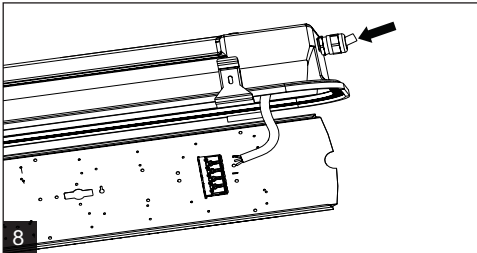
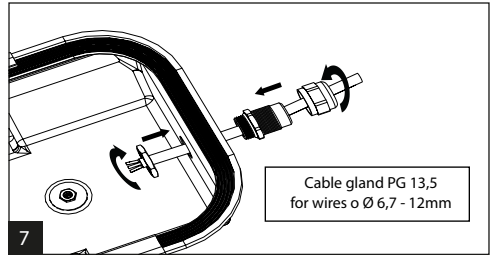
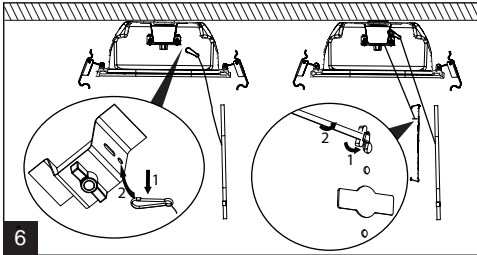


5C

# TREEVOS PERUN LED

IP65

230V  
50Hz



**The light source in this luminaire may be replaced only by the manufacturer or its contractual service technician or a similarly qualified person!**

Take care while fitting glass on rubber sealing for impacts on side of the glass and fast temperature changes. Properties of heat toughened glass and its susceptibility to breaking follow standard EN 12150-1. For areas where spontaneous fracture of glass means a higher safety risk and/or financial loss, we recommend usage of safety film (SF). Individual cases should be discussed with our technicians.

Installation can only be carried out by an authorized person and according to the mounting instructions. Any other installation is considered to be improper. For well installation and good luminaire work is necessary ensure a planarity of a mounting surface. Make sure that the luminaire is always disconnected from the power supply before the installation work. Do not use the luminaire if damaged or if damaged the power cable. Only damp microfiber cloth can be used for cleaning. Technical changes are subjected without notice. Do not dispose the luminaire or its parts as household waste, but make the proper recycling.