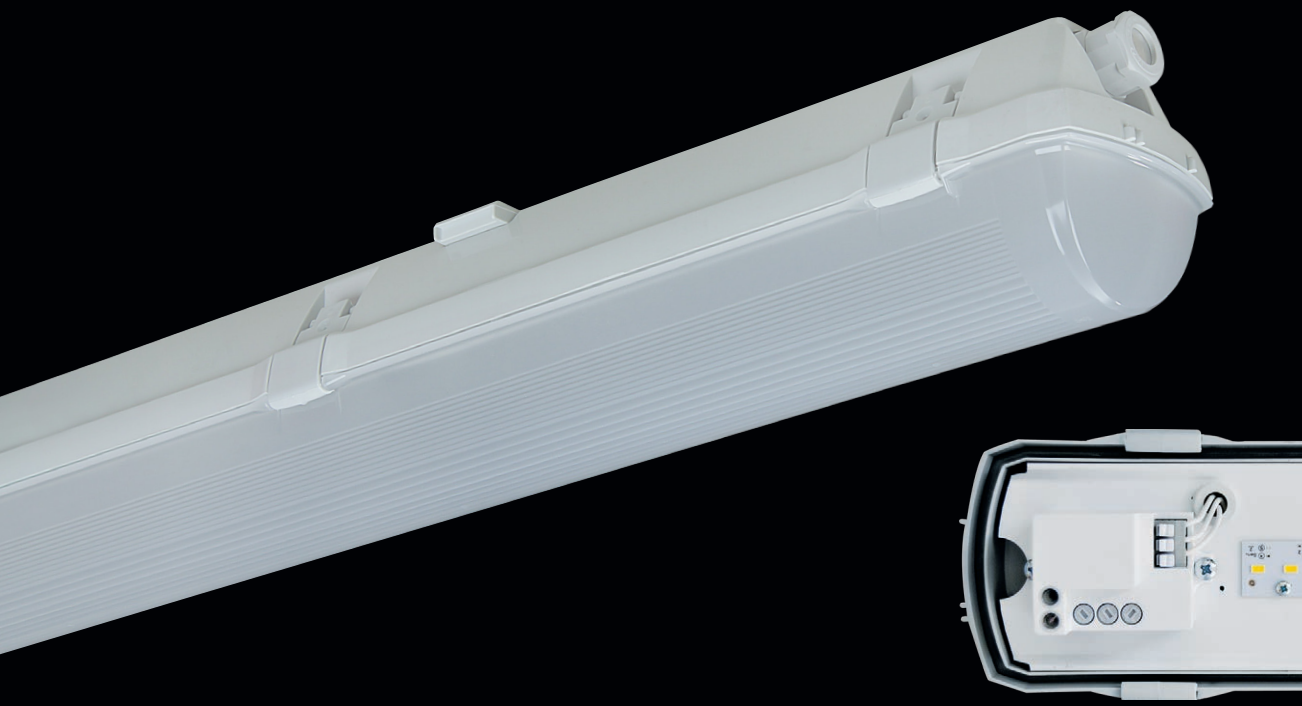


# PRIMA LED Sensor



... dustproof, waterproof and impact-resistant.

## USE

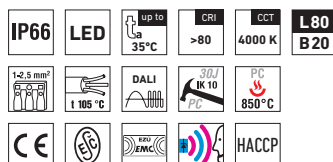
The light fitting is suitable for industrial indoor and outdoor roofed spaces, warehouses, sports areas, workshops, garages, transport terminals, utility structures and laboratories without a danger of explosion of gases, dust and combustible fumes.

The light fitting is resistant to dust, moisture and spouting water. The body and the diffuser made of polycarbonate (PC) have the increased resistance against deformation and impact.

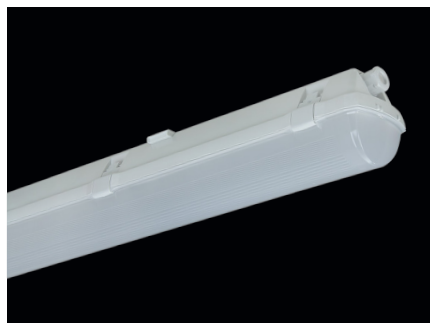
(It is necessary to consider exhalation in the air which can reduce the usability of the plastic at installations in an aggressive environment, see also page 127).

## ADVANTAGES

- Light fitting protection **IP66**
- Maximum ambient temperature up to **t<sub>a</sub> = 35 °C**
- Lifetime: 50,000 hours / L80B20
- Diffuser: translucent polycarbonate (PC) = high mechanical resistance
- Body: grey polycarbonate (PC) = high mechanical resistance
- Up to 45 % lower electricity consumption when compared to tubes T5
- In DALI version: possibility of constant luminous flux for whole lifetime (CLO)
- Constant luminous flux even in ambient temperature of -20 °C
- Standard model - CRI > 80: 4000 K
- At request CRI > 80: 3000 K, 5000 K, 6500 K, CRI > 90: 3000 K, 4000 K
- With built-in **microwave motion sensor**
- Possibility multiple **regulation** of sensors with one **remote control**
- It can be delivered in dimmable or emergency version
- Certification: ESČ, HACCP



# PRIMA LED SNS PC, PCc



## TECHNICAL DESCRIPTION

- Light fitting protection: IP66
- Maximum ambient temperature:  $t_a = 35^\circ\text{C}$ , Maximum ambient temperature:  $t_a = 25^\circ\text{C}$  (version with emergency back-up source for 1 or 3 hours; M1h, M3h)
- Maximum system efficacy: 136 lm/W
- The watt and lumen values can, in accordance with valid standards, vary by  $\pm 7,5\%$
- Standard model - CRI > 80: 4000 K
- Lifetime: 50,000 hours / L80B20
- Diffuser: translucent polycarbonate (PC), UV stable, impact-resistant
- Body: grey polycarbonate (PC), UV stable, impact-resistant
- Reflector: steel sheet, white colour (RAL 9003)
- Clips: polyamide + 15 % glass fibre or stainless steel + polyamide
- Sealing: polyurethane (PUR), foamed body groove
- Cable glands: screwed PG 13,5, or rubber
- Distance part: polyamide + 10 % glass fibre
- Terminal block: screwless, three-pole (basic version), or screwed
- Installation: package contains stainless hooks and stainless brackets
- Electric equipment: LED modules, current driver or current driver DALI
- Motion sensor:  $360^\circ$  range, switch on height 1 – 8 m, time range 10 sec – 60 min, switch-on sensitivity 2 – 2000 lux

Code	Type	Luminous flux of LED modules [lm]	Luminous flux of light fitting [lm]	Power consumption [W]	System efficacy [lm/W]	Net weight [kg]	A [mm]	D [mm]
For ambient temperature $t_a = 35^\circ\text{C}$ - body: grey polycarbonate - diffuser: translucent polycarbonate								
64010	PRIMA LED 1.2ft SNS PC 1300/840	1300	1290	10	129	1,3	662	350
64020	PRIMA LED 1.2ft SNS PC 1600/840	1600	1550	12	129	1,2	662	350
64030	PRIMA LED 1.2ft SNS PC 2200/840	2200	1970	15	131	1,3	662	350
64040	PRIMA LED 1.4ft SNS PC 2600/840	2600	2390	18	133	1,9	1272	700
64050	PRIMA LED 1.4ft SNS PC 3200/840	3200	2940	22	134	1,7	1272	700
64060	PRIMA LED 1.4ft SNS PC 4400/840	4400	4000	30	133	1,9	1272	700
64460	PRIMA LED 1.4ft SNS PC 6400/840	6400	5880	46	128	1,9	1272	700
64070	PRIMA LED 1.5ft SNS PC 3250/840	3250	2930	22	133	2,3	1572	940
64080	PRIMA LED 1.5ft SNS PC 4000/840	4000	3650	27	135	2,2	1572	940
64090	PRIMA LED 1.5ft SNS PC 5500/840	5500	5040	37	136	2,3	1572	940
64490	PRIMA LED 1.5ft SNS PC 8000/840	8000	7350	58	127	2,3	1572	940

64020 PRIMA LED 1.2ft SNS PC 1600/840 = suitable replacement for T8 fl. tube light fitting PRIMA 118 – 1 x 18W  
 64050 PRIMA LED 1.4ft SNS PC 3200/840 = suitable replacement for T8 fl. tube light fitting PRIMA 136 – 1 x 36W  
 64080 PRIMA LED 1.5ft SNS PC 4000/840 = suitable replacement for T8 fl. tube light fitting PRIMA 158 – 1 x 58W

## PRIMA LED SNS PC

Non-dimmable driver - plastic clips

Code	Type	1F	3F	M1h	M3h	3F M1h	3F M3h
64010	PRIMA LED 1.2ft SNS PC 1300/840	x	x	x	x	x	x
64020	PRIMA LED 1.2ft SNS PC 1600/840	x	x	x	x	x	x
64030	PRIMA LED 1.2ft SNS PC 2200/840	x	x	x	x	x	x
64040	PRIMA LED 1.4ft SNS PC 2600/840	64140	64340	64044	x	64344	x
64050	PRIMA LED 1.4ft SNS PC 3200/840	64150	64350	64054	x	64354	x
64060	PRIMA LED 1.4ft SNS PC 4400/840	64160	64360	64064	x	64364	x
64460	PRIMA LED 1.4ft SNS PC 6400/840	64461	64462	64463	x	64465	x
64070	PRIMA LED 1.5ft SNS PC 3250/840	64170	64370	64074	64075	64374	64375
64080	PRIMA LED 1.5ft SNS PC 4000/840	64180	64380	64084	64085	64384	64385
64090	PRIMA LED 1.5ft SNS PC 5500/840	64190	64390	64094	64095	64394	64395
64490	PRIMA LED 1.5ft SNS PC 8000/840	64491	64492	64493	x	64495	x

## PRIMA LED SNS PCc

Non-dimmable driver - stainless clips (c)

Code	Type	1F	3F	M1h	M3h	3F M1h	3F M3h
64210	PRIMA LED 1.2ft SNS PCc 1300/840	x	x	x	x	x	x
64220	PRIMA LED 1.2ft SNS PCc 1600/840	x	x	x	x	x	x
64230	PRIMA LED 1.2ft SNS PCc 2200/840	x	x	x	x	x	x
64240	PRIMA LED 1.4ft SNS PCc 2600/840	64540	64640	64244	x	64644	x
64250	PRIMA LED 1.4ft SNS PCc 3200/840	64550	64650	64254	x	64654	x
64260	PRIMA LED 1.4ft SNS PCc 4400/840	64560	64660	64264	x	64664	x
64760	PRIMA LED 1.4ft SNS PCc 6400/840	64761	64762	64763	x	64765	x
64270	PRIMA LED 1.5ft SNS PCc 3250/840	64570	64670	64274	64275	64674	64675
64280	PRIMA LED 1.5ft SNS PCc 4000/840	64580	64680	64284	64285	64684	64685
64290	PRIMA LED 1.5ft SNS PCc 5500/840	64590	64690	64294	64295	64694	64695
64790	PRIMA LED 1.5ft SNS PCc 8000/840	64791	64792	64793	x	64795	x

Example of type marking: 64644 = PRIMA LED 1.4ft SNS PC 2600/840 **3F M1h**

## PRIMA LED SNS PC CORRIDOR

Code	Type	Digital dimmable driver - plastic clips					
		1F	3F	M1h	M3h	3F M1h	3F M3h
64043	PRIMA LED 1.4ft SNS PC 2600/840 CORRIDOR	64143	64343	64047	x	64347	x
64053	PRIMA LED 1.4ft SNS PC 3200/840 CORRIDOR	64153	64353	64057	x	64357	x
64063	PRIMA LED 1.4ft SNS PC 4400/840 CORRIDOR	64163	64363	64067	x	64367	x
64073	PRIMA LED 1.5ft SNS PC 3250/840 CORRIDOR	64173	64373	64077	64078	64377	64378
64083	PRIMA LED 1.5ft SNS PC 4000/840 CORRIDOR	64183	64383	64087	64088	64387	64388
64093	PRIMA LED 1.5ft SNS PC 5500/840 CORRIDOR	64193	64393	64097	64098	64397	64398

## PRIMA LED SNS PCc CORRIDOR

Code	Type	Digital dimmable driver - stainless clips (c)					
		1F	3F	M1h	M3h	3F M1h	3F M3h
64243	PRIMA LED 1.4ft SNS PCc 2600/840 CORRIDOR	64543	64643	64247	x	64647	x
64253	PRIMA LED 1.4ft SNS PCc 3200/840 CORRIDOR	64553	64653	64257	x	64657	x
64263	PRIMA LED 1.4ft SNS PCc 4400/840 CORRIDOR	64563	64663	64267	x	64667	x
64273	PRIMA LED 1.5ft SNS PCc 3250/840 CORRIDOR	64573	64673	64277	64278	64677	64678
64283	PRIMA LED 1.5ft SNS PCc 4000/840 CORRIDOR	64583	64683	64287	64288	64687	64688
64293	PRIMA LED 1.5ft SNS PCc 5500/840 CORRIDOR	64593	64693	64297	64298	64697	64698

Example of type marking: 64693 = PRIMA LED 1.5ft SNS PCc 5500/840 CORRIDOR **3F**

## LEGEND

**CORRIDOR** – model with digitally dimmable driver. Settings can be configured  
– in primary setting the light will turn on to a maximum output when triggered by motion and stay in the mode for 5 minutes, then its intensity will decrease to 10 %.

**1F** – 1 phase wiring cables for through-wiring  
**3F** – 3 phase wiring cables for through-wiring

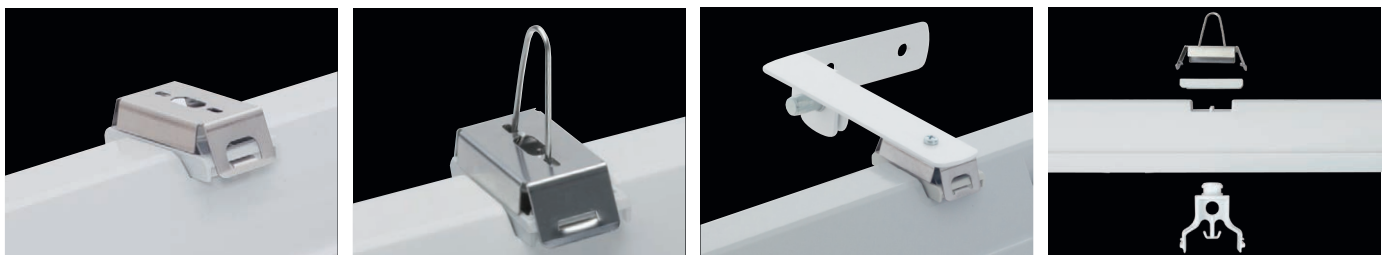
**M1h** – emergency back-up source with operating time of 1 hour (SA) for both permanent and emergency illumination

**M3h** – emergency back-up source with operating time of 3 hours (SA) for both permanent and emergency illumination

Batteries must be formatted before their putting into operation. Assembly instructions must be observed at installation.

## LIGHT FITTING ATTACHMENT

- Directly to a ceiling or a wall with the use of screws and stainless brackets
- Suspension with the use of stainless hooks
- Attachment with the use of side hangers to the wall



## LIGHT FITTING DETAILED VIEW

PRIMA LED SNS

