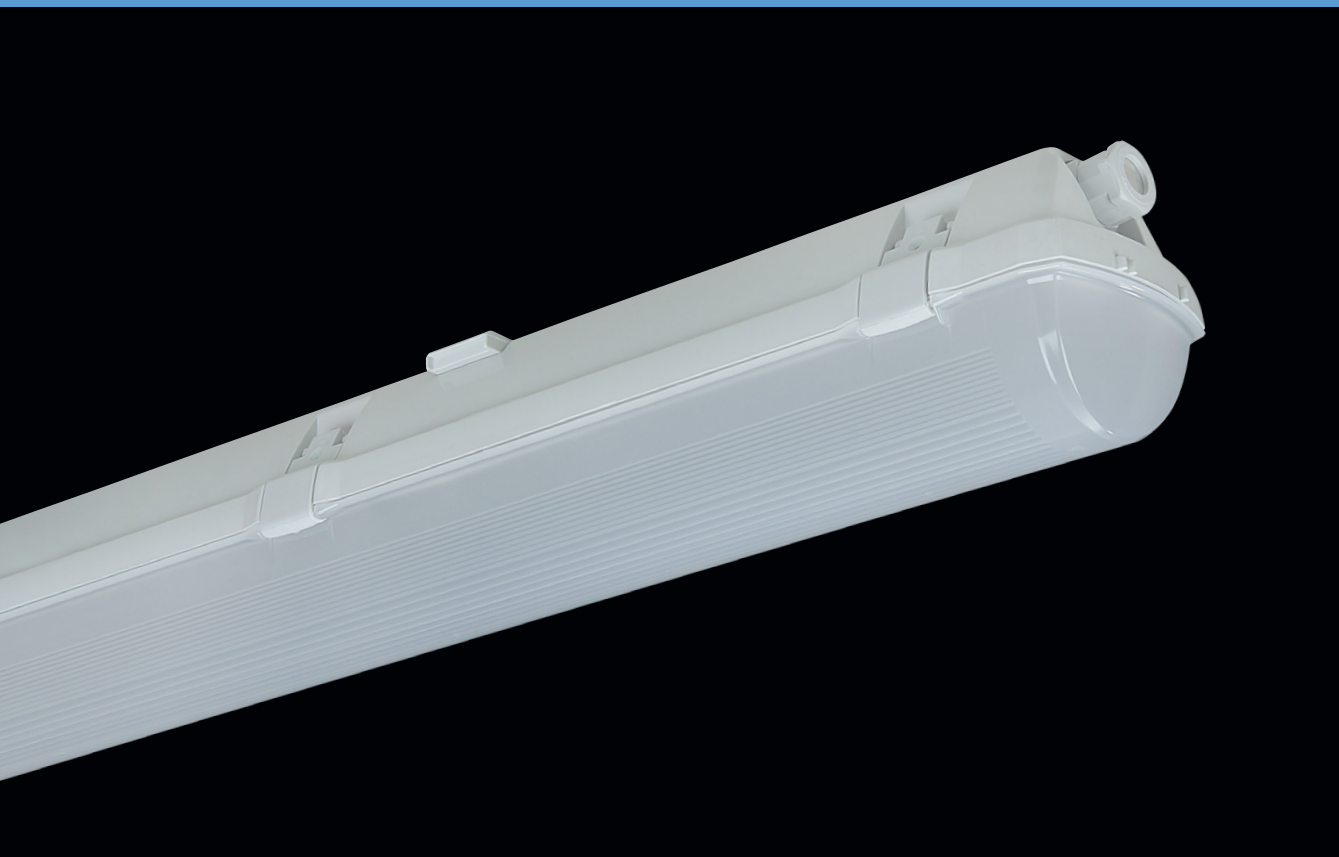


PRIMA LED VP



... for outdoor spaces.

USE

The light fitting is suitable for the installation in outdoor spaces with shelter. It is equipped with a ventilation plug made of polyamide which eliminates the presence of condensation fumes and underpressure in the light fitting caused by ambient temperature fluctuations.

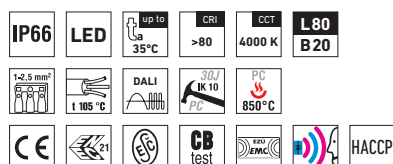
The light fitting is resistant to dust, moisture and spouting water. The body and the diffuser made of polycarbonate (PC) have the increased resistance against deformation and impact.

(It is necessary to consider exhalation in the air which can reduce the usability of the plastic at installations in an aggressive environment, see also page 127).

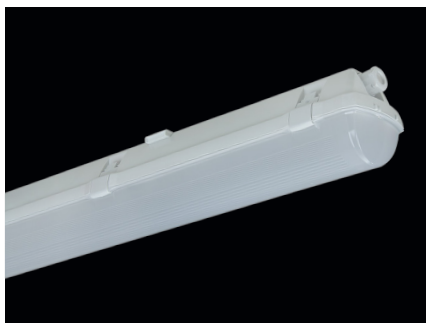
ADVANTAGES

- Light fitting protection **IP66**
- Maximum ambient temperature up to **t_a = 35°C**
- Lifetime: 50,000 hours / L80B20
- Diffuser: translucent polycarbonate (PC) = high mechanical resistance
- Body: grey polycarbonate (PC) = high mechanical resistance
- Up to 45 % lower electricity consumption when compared to tubes T5
- In DALI version: possibility of constant luminous flux for whole lifetime (CLO)
- Constant luminous flux even in ambient temperature of -20 °C

- Standard model - CRI > 80: 4000 K
- At request CRI > 80: 3000 K, 5000 K, 6500 K, CRI > 90: 3000 K, 4000 K
- It can be delivered in dimmable or emergency version
- Certification: ESĀ, ENEC, CB, HACCP

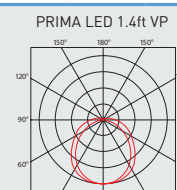
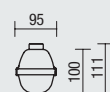
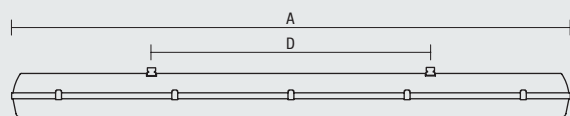


PRIMA LED VP, VPc



TECHNICAL DESCRIPTION

- Light fitting protection: IP66
- Maximum ambient temperature: $t_a = 35^\circ\text{C}$, Maximum ambient temperature: $t_a = 25^\circ\text{C}$ (version with emergency back-up source for 1 or 3 hours; M1h, M3h)
- Maximum system efficacy: 136 lm/W
- The watt and lumen values can, in accordance with valid standards, vary by $\pm 7,5\%$
- Standard model - CRI > 80: 4000 K
- Lifetime: 50,000 hours / L80B20
- Diffuser: translucent polycarbonate (PC), UV stable, impact-resistant
- Body: grey polycarbonate (PC), UV stable, impact-resistant
- Reflector: steel sheet, white colour (RAL 9003)
- Ventilation plug: type BVPB-01 made of polyamide, size M12 x 1.5
- Clips: polyamide + 15 % glass fibre or stainless steel + polyamide
- Sealing: polyurethane (PUR), foamed body groove
- Cable glands: screwed PG 13,5, or rubber
- Distance part: polyamide + 10 % glass fibre
- Terminal block: screwless, three-pole (basic version), or screwed
- Installation: package contains stainless hooks and stainless brackets
- Electric equipment: LED modules, current driver or current driver DALI



Code	Type	Luminous flux of LED modules [lm]	Luminous flux of light fitting [lm]	Power consumption [W]	System efficacy [lm/W]	Net weight [kg]	A [mm]	D [mm]
For ambient temperature $t_a = 35^\circ\text{C}$ - body: grey polycarbonate - diffuser: translucent polycarbonate								
66010	PRIMA LED 1.2ft VP 1300/840	1300	1290	10	129	1,3	662	350
66020	PRIMA LED 1.2ft VP 1600/840	1600	1550	12	129	1,2	662	350
66030	PRIMA LED 1.2ft VP 2200/840	2200	1970	15	131	1,3	662	350
66040	PRIMA LED 1.4ft VP 2600/840	2600	2390	18	133	1,9	1272	700
66050	PRIMA LED 1.4ft VP 3200/840	3200	2940	22	134	1,7	1272	700
66060	PRIMA LED 1.4ft VP 4400/840	4400	4000	30	133	1,9	1272	700
66460	PRIMA LED 1.4ft VP 6400/840	6400	5880	46	128	1,9	1272	700
66070	PRIMA LED 1.5ft VP 3250/840	3250	2930	22	133	2,3	1572	940
66080	PRIMA LED 1.5ft VP 4000/840	4000	3650	27	135	2,2	1572	940
66090	PRIMA LED 1.5ft VP 5500/840	5500	5040	37	136	2,3	1572	940
66490	PRIMA LED 1.5ft VP 8000/840	8000	7350	58	127	2,3	1572	940

66020 PRIMA LED 1.2ft VP 1600/840 = suitable replacement for T8 fl. tube light fitting PRIMA 118 - 1 x 18W

66050 PRIMA LED 1.4ft VP 3200/840 = suitable replacement for T8 fl. tube light fitting PRIMA 136 - 1 x 36W

66080 PRIMA LED 1.5ft VP 4000/840 = suitable replacement for T8 fl. tube light fitting PRIMA 158 - 1 x 58W

PRIMA LED VP

Non-dimmable driver - plastic clips

Code	Type	1F	3F	M1h	M3h	3F M1h	3F M3h
66010	PRIMA LED 1.2ft VP 1300/840	x	x	x	x	x	x
66020	PRIMA LED 1.2ft VP 1600/840	x	x	x	x	x	x
66030	PRIMA LED 1.2ft VP 2200/840	x	x	x	x	x	x
66040	PRIMA LED 1.4ft VP 2600/840	66140	66340	66044	x	66344	x
66050	PRIMA LED 1.4ft VP 3200/840	66150	66350	66054	x	66354	x
66060	PRIMA LED 1.4ft VP 4400/840	66160	66360	66064	x	66364	x
66460	PRIMA LED 1.4ft VP 6400/840	66461	66462	66463	x	66465	x
66070	PRIMA LED 1.5ft VP 3250/840	66170	66370	66074	66075	66374	66375
66080	PRIMA LED 1.5ft VP 4000/840	66180	66380	66084	66085	66384	66385
66090	PRIMA LED 1.5ft VP 5500/840	66190	66390	66094	66095	66394	66395
66490	PRIMA LED 1.5ft VP 8000/840	66491	66492	66493	x	66495	x

PRIMA LED VPc

Non-dimmable driver - stainless clips (c)

Code	Type	1F	3F	M1h	M3h	3F M1h	3F M3h
66210	PRIMA LED 1.2ft VPc 1300/840	x	x	x	x	x	x
66220	PRIMA LED 1.2ft VPc 1600/840	x	x	x	x	x	x
66230	PRIMA LED 1.2ft VPc 2200/840	x	x	x	x	x	x
66240	PRIMA LED 1.4ft VPc 2600/840	66540	66640	66244	x	66644	x
66250	PRIMA LED 1.4ft VPc 3200/840	66550	66650	66254	x	66654	x
66260	PRIMA LED 1.4ft VPc 4400/840	66560	66660	66264	x	66664	x
66760	PRIMA LED 1.4ft VPc 6400/840	66761	66762	66763	x	66765	x
66270	PRIMA LED 1.5ft VPc 3250/840	66570	66670	66274	66275	66674	66675
66280	PRIMA LED 1.5ft VPc 4000/840	66580	66680	66284	66285	66684	66685
66290	PRIMA LED 1.5ft VPc 5500/840	66590	66690	66294	66295	66694	66695
66790	PRIMA LED 1.5ft VPc 8000/840	66791	66792	66793	x	66795	x

Example of type marking: 66644 = PRIMA LED 1.4ft VP 2600/840 3F M1h

PRIMA LED VP DALI

Digital dimmable driver DALI - plastic clips

Code	Type	1F	3F	M1h	M3h	3F M1h	3F M3h
66013	PRIMA LED 1.2ft VP 1300/840 DALI	x	x	x	x	x	x
66023	PRIMA LED 1.2ft VP 1600/840 DALI	x	x	x	x	x	x
66033	PRIMA LED 1.2ft VP 2200/840 DALI	x	x	x	x	x	x
66043	PRIMA LED 1.4ft VP 2600/840 DALI	66143	66343	66047	x	66347	x
66053	PRIMA LED 1.4ft VP 3200/840 DALI	66153	66353	66057	x	66357	x
66063	PRIMA LED 1.4ft VP 4400/840 DALI	66163	66363	66067	x	66367	x
66860	PRIMA LED 1.4ft VP 6400/840 DALI	66861	66862	66863	x	66865	x
66073	PRIMA LED 1.5ft VP 3250/840 DALI	66173	66373	66077	66078	66377	66378
66083	PRIMA LED 1.5ft VP 4000/840 DALI	66183	66383	66087	66088	66387	66388
66093	PRIMA LED 1.5ft VP 5500/840 DALI	66193	66393	66097	66098	66397	66398
66890	PRIMA LED 1.5ft VP 8000/840 DALI	66891	66892	66893	x	66895	x

PRIMA LED VPc DALI

Digital dimmable driver DALI - stainless clips (c)

Code	Type	1F	3F	M1h	M3h	3F M1h	3F M3h
66213	PRIMA LED 1.2ft VPc 1300/840 DALI	x	x	x	x	x	x
66223	PRIMA LED 1.2ft VPc 1600/840 DALI	x	x	x	x	x	x
66233	PRIMA LED 1.2ft VPc 2200/840 DALI	x	x	x	x	x	x
66243	PRIMA LED 1.4ft VPc 2600/840 DALI	66543	66643	66247	x	66647	x
66253	PRIMA LED 1.4ft VPc 3200/840 DALI	66553	66653	66257	x	66657	x
66263	PRIMA LED 1.4ft VPc 4400/840 DALI	66563	66663	66267	x	66667	x
66960	PRIMA LED 1.4ft VPc 6400/840 DALI	66961	66962	66963	x	66965	x
66273	PRIMA LED 1.5ft VPc 3250/840 DALI	66573	66673	66277	66278	66677	66678
66283	PRIMA LED 1.5ft VPc 4000/840 DALI	66583	66683	66287	66288	66687	66688
66293	PRIMA LED 1.5ft VPc 5500/840 DALI	66593	66693	66297	66298	66697	66698
66990	PRIMA LED 1.5ft VPc 8000/840 DALI	66991	66992	66993	x	66995	x

Example of type marking: 66693 = PRIMA LED 1.5ft VPc 5500/840 DALI 3F

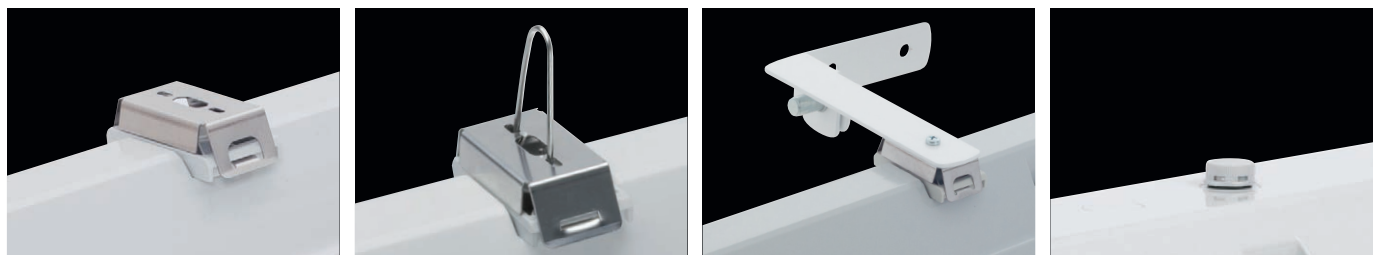
LEGEND

- DALI** – version with digital dimmable driver DALI
- 1F** – 1 phase wiring cables for through-wiring
- 3F** – 3 phase wiring cables for through-wiring

- M1h** – emergency back-up source with operating time of 1 hour (SA) for both permanent and emergency illumination
 - M3h** – emergency back-up source with operating time of 3 hours (SA) for both permanent and emergency illumination
- Batteries must be formatted before their putting into operation. Assembly instructions must be observed at installation.

LIGHT FITTING ATTACHMENT

- a) Directly to a ceiling with the use of screws and stainless brackets
- b) Suspension with the use of stainless hooks
- c) Attachment with the use of side hangers to the wall



LIGHT FITTING DETAILED VIEW

PRIMA LED VP

