

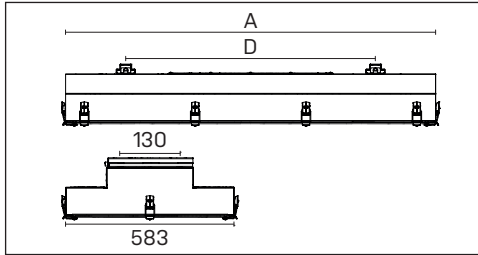
TREEVOS

TITAN LED

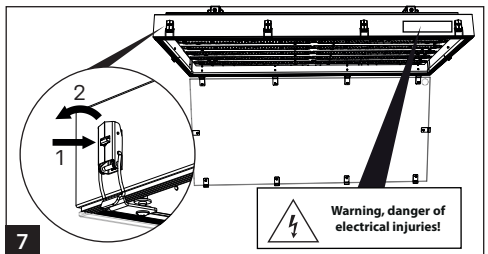
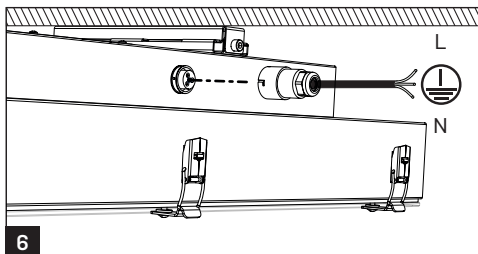
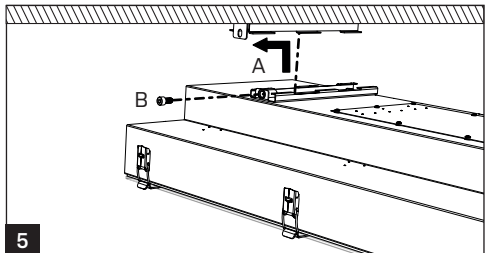
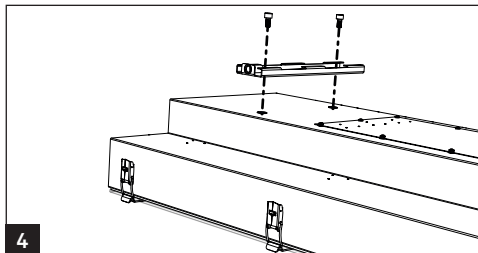
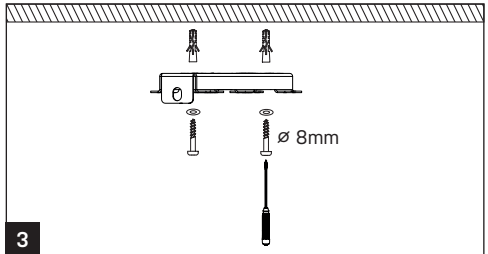
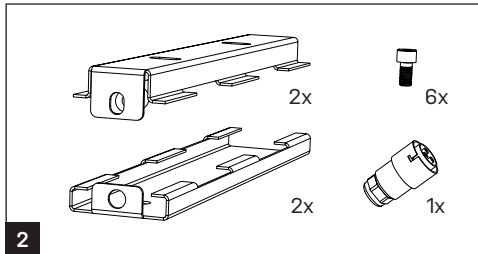
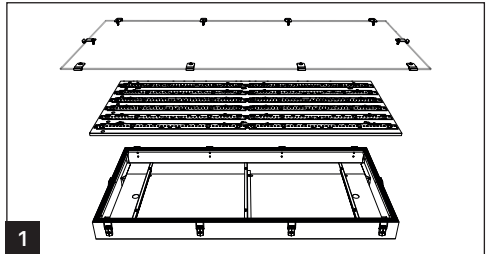
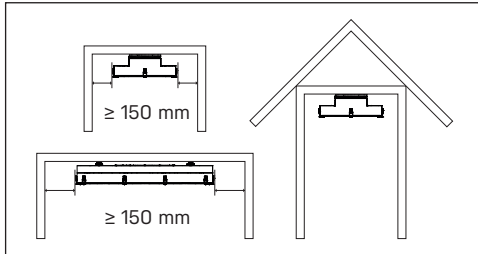


IP54

230 V
50 Hz



	A [mm]	D [mm]
5.4ft	1244	820
6.4ft	1244	820
7.4ft	1244	820



TREEVOS

TITAN LED



IP54

230 V
50 Hz



The light source in this luminaire may be replaced only by the manufacturer or its contractual service technician or a similarly qualified person!

Installation can only be carried out by an authorized person and according to the mounting instructions. Any other installation is considered to be improper. For well installation and good luminaire work is necessary ensure a planarity of a mounting surface. Make sure that the luminaire is always disconnected from the power supply before the installation work. Do not use the luminaire if damaged or if damaged the power cable. Only damp microfiber cloth can be used for cleaning. Technical changes are subjected without notice. Do not dispose the luminaire or its parts as household waste, but make the proper recycling.

Characteristics of the used tempered glass and its shattering power are controlled by the ČSN EN 12150-1 standard. For applications where spontaneous fracture means a higher safety risk, we recommend to use the version with safety film (SF).